



The Impact of Social Sciences
and Humanities on Society

17-18 October 2019, Washington DC

Room 4018+4019, 11.30am - 12.45pm

Synergy with governmental institutions

James Wilsdon (Chair)

Ursula Gobel

Avi Green

A network diagram with red and black nodes connected by lines, set against a light background.

The Impact of Social Sciences and Humanities on Society

17-18 October 2019, Washington DC

Synergy with governmental institutions

James Wilsdon (Chair)

*Vice-Chair of the International Network for Governmental Science Advice
& Director of Research and Innovation, Faculty of Social Sciences at the
University of Sheffield, United Kingdom*



The Impact of Social Sciences and Humanities on Society

17-18 October 2019, Washington DC

Synergy with governmental institutions

Ursula Gobel

*Associate Vice-President Future Challenges, Social Sciences and Humanities
Research Council, Canada*

Interactive polling with Slido

1. Go to www.slido.com
1. Enter the event code #G908 to join the conversation
1. Warm-up poll: *How would you best describe yourself?*

SSHRC  CRSH

IMAGINING CANADA'S FUTURE



AESIS 2019

Ursula Gobel
Associate Vice President,
Future Challenges

SSHRC - Our role

Federal agency mandated to promote and support postsecondary-based research and training in the social sciences and humanities

Through grants, fellowships and scholarships SSHRC:

- **Trains** the next generation of talented, creative thinkers and doers
- **Builds** knowledge and understanding about people, cultures and societies
- **Drives** the innovations that address the challenges of today and tomorrow





TALENT

INSIGHT

CONNECTION

Picture yourself in 2012...



What were the key global challenges?

1. Quest for energy & natural resources
2. Erosion of liberal democracy
3. An interconnected and evolving global landscape
4. Global food security and access
5. A successful shared future with Indigenous peoples
6. Reconstructing personal identity

2014-2017 Future Challenge Areas



New ways of learning



Quest for energy & natural resources



Emerging technologies



A successful shared future with Indigenous peoples



An interconnected and evolving global landscape



Global peak population

Imagining Canada's Future Objectives



1. Build Research preparedness



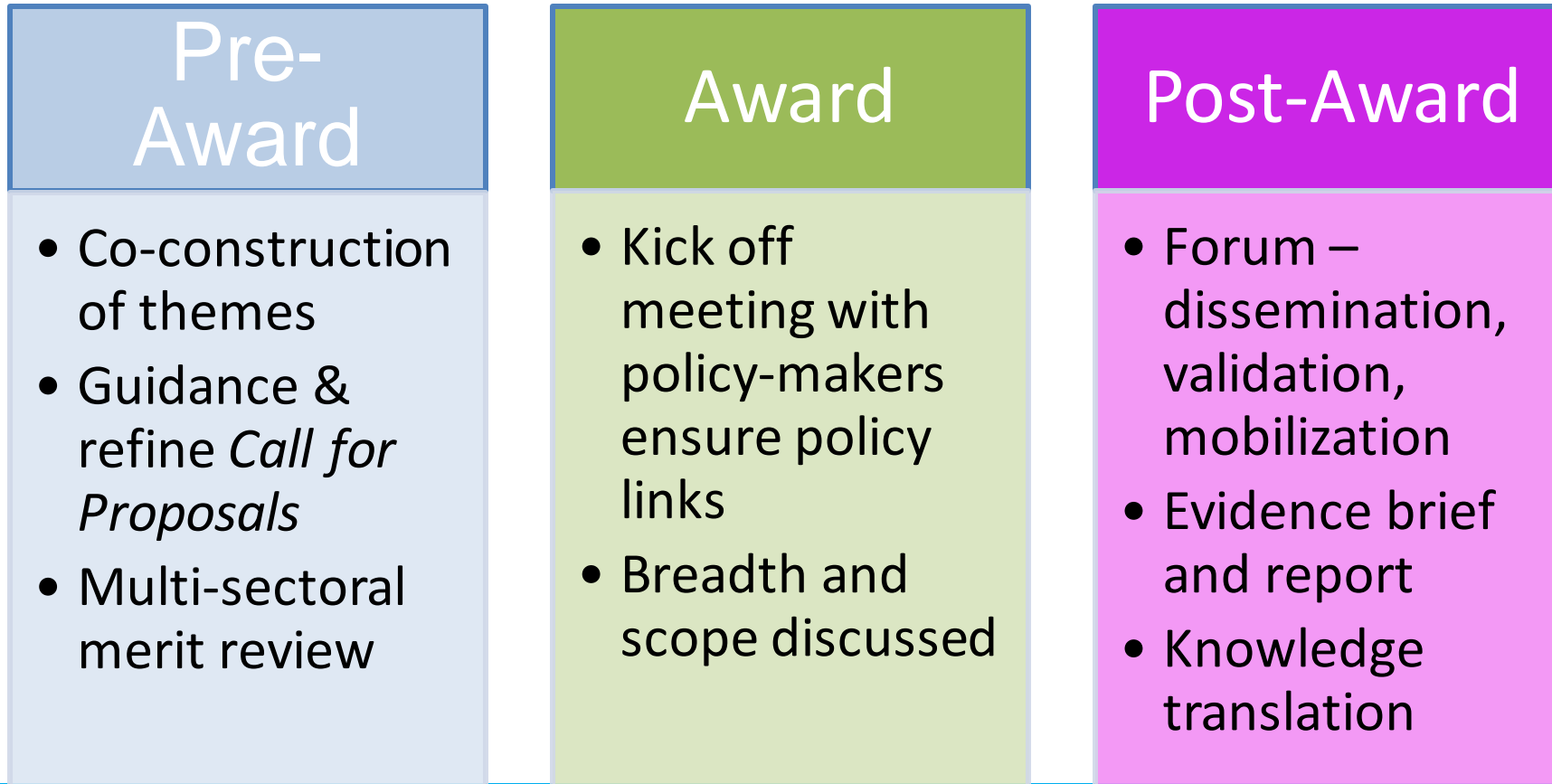
2. Expand cross-sector collaboration & partnerships



3. Mobilize Knowledge

Shaping synergies

Knowledge Synthesis Grants



IMAGINING CANADA'S FUTURE

2013-2017

ASKING TOMORROW'S QUESTIONS TODAY

Insights on Future Challenges

- Foresight identifies 6 top future challenges for Canada
- SSHRC launches Knowledge Synthesis Grants (KSG)
- Social sciences and humanities expertise grows in demand



6 future challenge areas (FCAs)

\$3M invested in KSG competitions including co-funding

Research Capacity

- Data analysis highlights research capacity
- Graduate students address FCAs
- Strong focus placed on knowledge mobilization



5 summary reports | **120** KSG reports

over **25%** projects aligned to FCAs over 5 years | **+3100** students

Collaboration & Engagement

- Special events convene academics and key stakeholders
- Multiple cross-sector partnerships established
- Unique initiatives co-created: e.g., International Policy Ideas Challenge

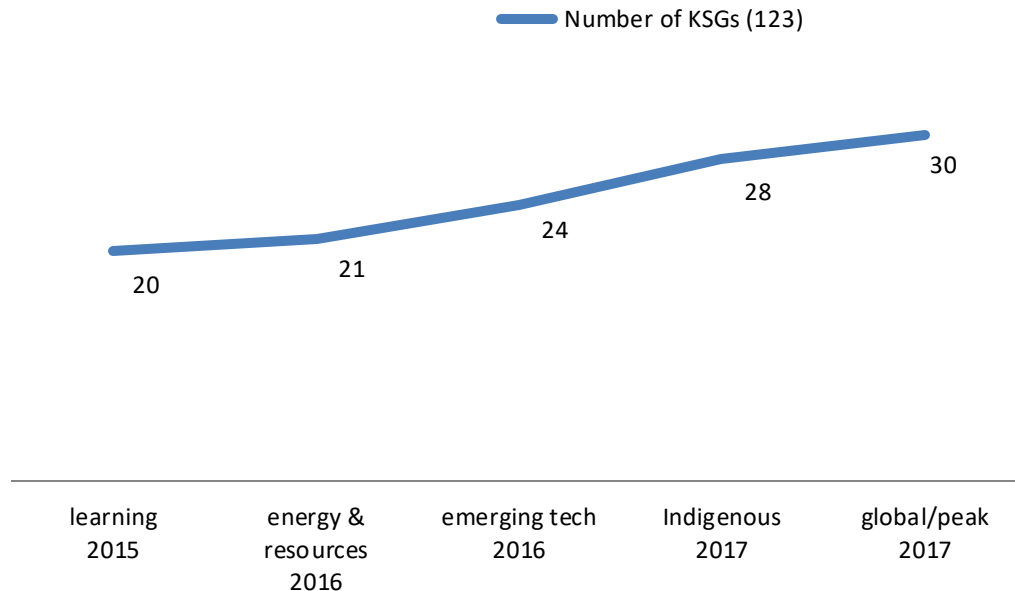


1250 participants | **≈ \$420k** leveraged

+40 partnerships | **+12** forums/workshops/roundtables

From KSGs to SSHRC open competitions

KSG projects granted 2015-2017



71%

Average proportion of principal investigators who have re-applied for SSHRC funding between 2015-2017*

**82
(60%)**

Number of unique KSG principal investigators who have successfully re-applied for SSHRC funding following their KSG grant (between 2015-2017), as an applicant or co-applicant*

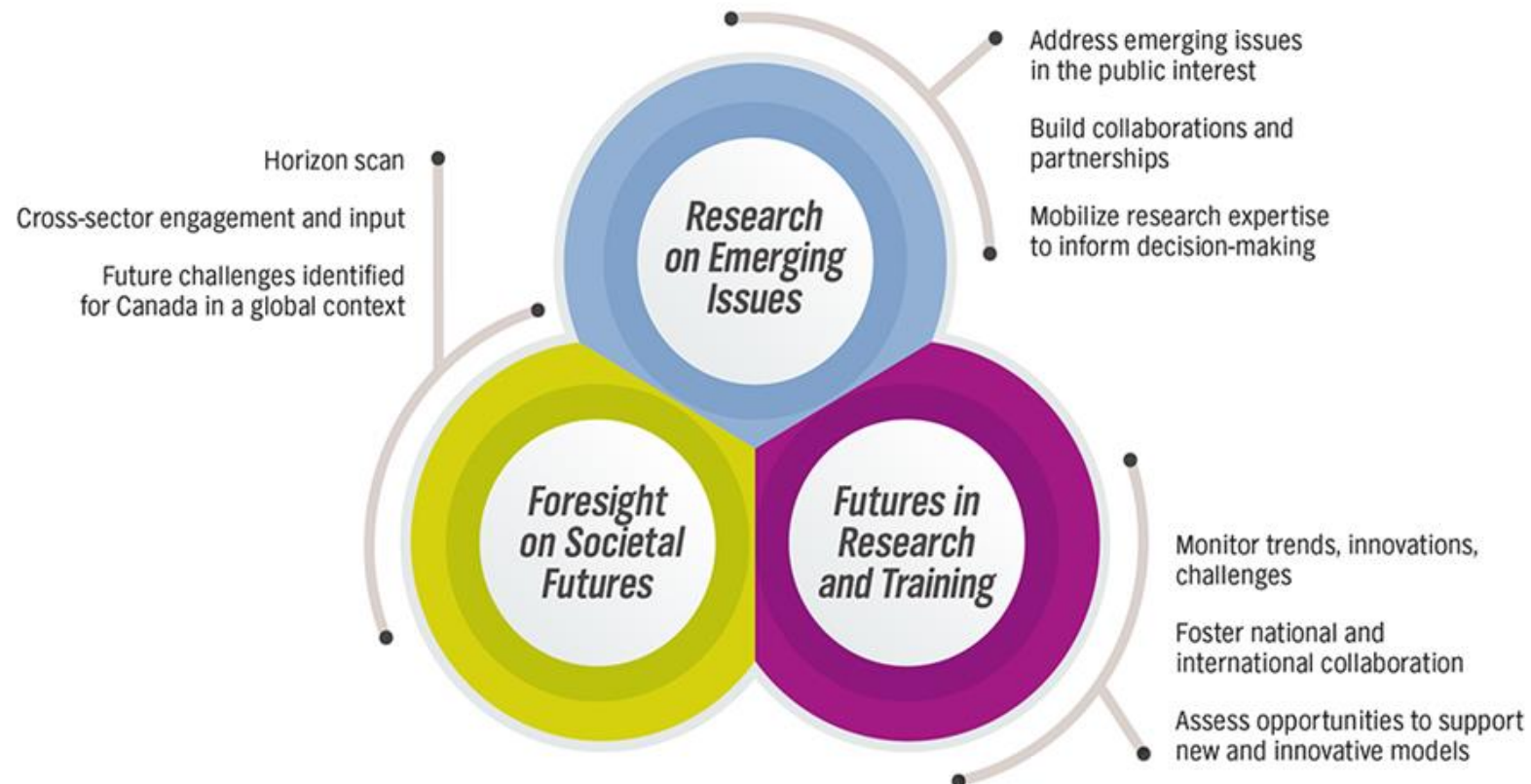
*Results as of July 2018; these numbers will continue to increase over time.

Imagining Canada's Future 2018-2021



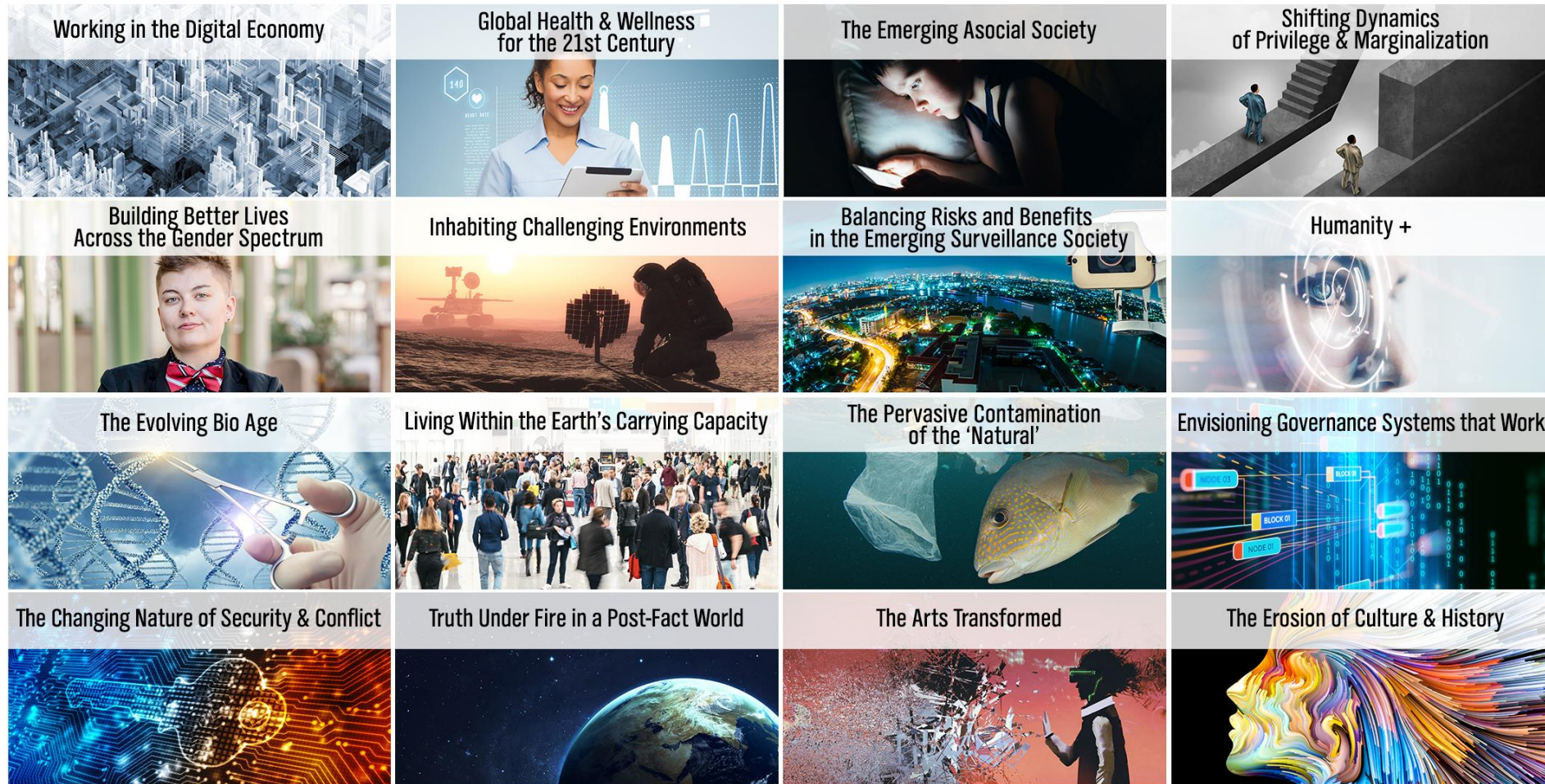
2018-2021

ASKING TOMORROW'S QUESTIONS TODAY



Foresight on Societal Futures

Global challenges horizon scan: 16 emerging challenges



Synergies - Research on emerging issues



Future of Canada-UK
Trade Relations



Smart Cities

Pursuing Complementary Approaches





Strengthening Indigenous Research Capacity
Renforcement des capacités en recherche autochtone



Alignment of the constellations

“I’ve received two of these grants (energy and global landscapes). I find these grants very helpful for quickly synthesizing existing info on a topic. I hope to eventually apply for grants to do primary empirical research on the knowledge synthesis conducted in these two grants”

“We were able to connect our results to the needs of government agency and to provide advice on research policy for that agency.”

Upcoming

- ❖ Living within Earth's Carrying Capacity (fall 2019)
- ❖ Working in the Digital Economy (fall 2020)
- ❖ The Emerging Asocial Society (fall 2021)
- ❖ Exploring an *Ideas Lab* Competition



Thank You

Contact information: ursula.gobel@sshrc-crsh.gc.ca

Questions: ifca-sica@sshrc-crsh.gc.ca

To learn more: <http://sshrc-crsh.gc.ca/imagining>



The Impact of Social Sciences and Humanities on Society

17-18 October 2019, Washington DC

Synergy with governmental institutions

Avi Green

Executive Director, Scholars Strategy Network

Avi Green

www.scholars.org

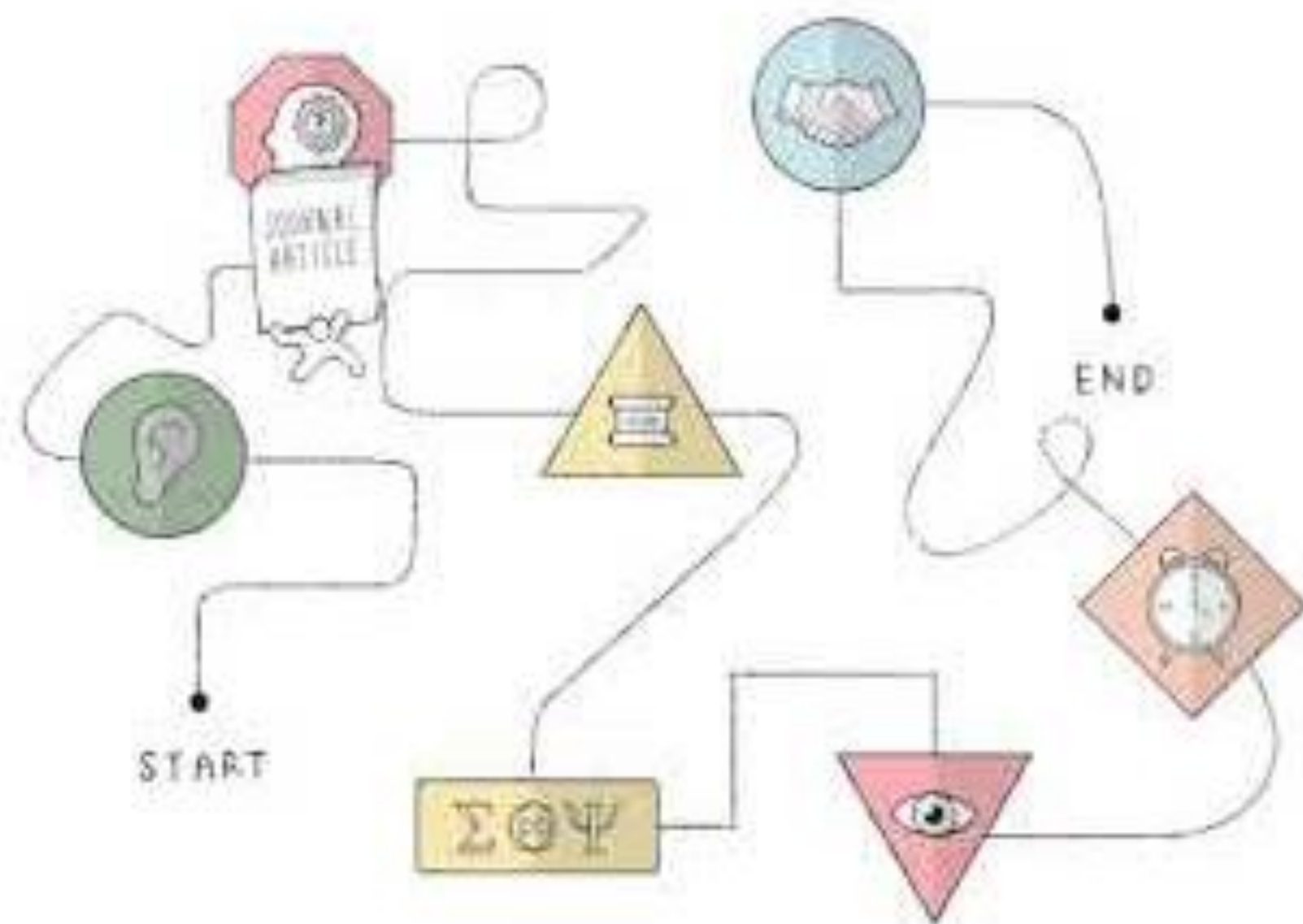
SCHOLARS
STRATEGY NETWORK



knowledge



Power



knowledge



Power





Thank You



SCHOLARS
STRATEGY NETWORK





The Impact of Social Sciences and Humanities on Society

17-18 October 2019, Washington DC

Synergy with governmental institutions

Panel discussion and Q&A

James Wilsdon (Chair)

Ursula Gobel

Avi Green



The Impact of Social Sciences and Humanities on Society

17-18 October 2019, Washington DC

Synergy with governmental institutions

James Wilsdon (Chair)

Vice-Chair of the International Network for Governmental Science Advice

By changing systems and institutions, we can increase researchers' contextual knowledge and strengthen relationships with practitioners, policymakers, and knowledge brokers – to have more impact

AESIS

 **#SSH19**



The Impact of Social Sciences and Humanities on Society

17-18 October 2019, Washington DC

Up Next

12.45-1.45pm Lunch

Mitsitam Cafe

1.45-3pm Indicators of SSH impact
Institutional assessment systems
Measurement tools
Public Engagement

Rasmuson Theater
Patrons Lounge
Room 4025
Room 4018+4019